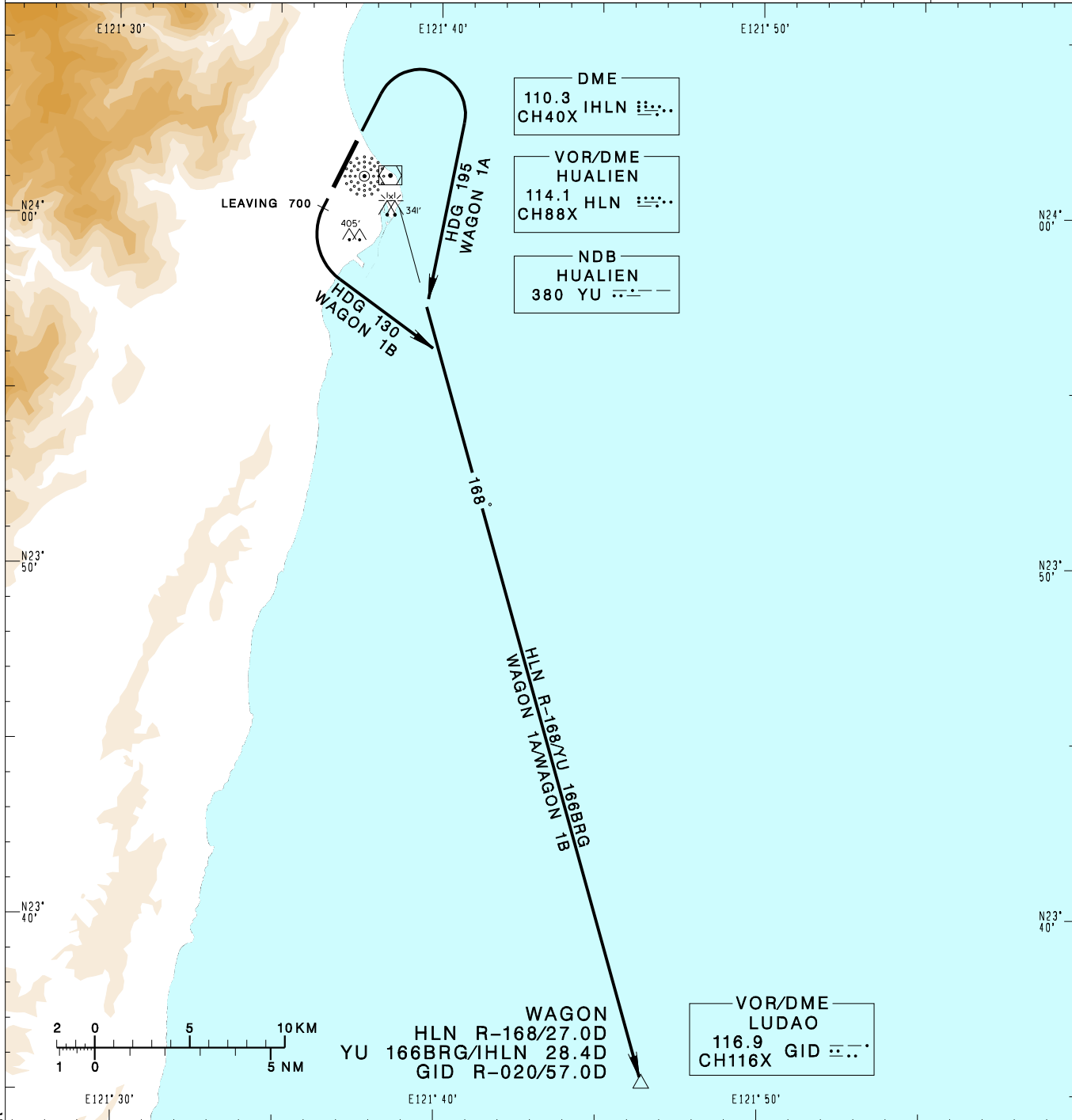


花蓮機場
HUALIEN AD

RCYU SID
WAGON 1A(RWY03)
WAGON 1B(RWY21)

TAIPEI APP 124.0 119.1 330.2 276.8		HUALIEN TWR 118.1 126.18 236.6		VAR 4°W 	
Apt Elev: 51'		Trans Level: FL130			MSA HLN VOR 25NM
Trans Alt: 11,000'					
BEARINGS ARE MAGNETIC; DISTANCES ARE NAUTICAL MILES; ELEVATIONS, HEIGHTS IN FEET					



CHANGES: NEW PAGE NUMBER

WAGON ONE ALFA DEPARTURE
After departure, turn right HDG 195 to track HLN R-168 /YU 166BRG to WAGON to join B591.

WAGON ONE BRAVO DEPARTURE
Depart RWY HDG until leaving 700ft, turn left HDG 130 to track HLN R-168 /YU 166BRG to WAGON to join B591.

- NOTE**
- 1.WAGON 1B: Requires a minimum climb gradient of 5%(305ft/NM) until 2000ft.
 - 2.Caution high terrain west of the airport.
 - 3.A 341ft MSL stack at 1.52NM EAST of THR03.
 - 4.A 405ft MSL tree at 1.18NM SE of THR03.